

Road Atlas of Ferry County

Road Atlases from Map Metrics evolved from our work providing address data for Enhanced 911 Systems in NE Washington. This edition continues that tradition by including 12,000 miles of unnamed road lines digitized from aerial photography. These are the only maps available with this information.

Brown Roads with thin dotted lines and olive-colored roads that appear on these pages may not be passable even with four wheel drive vehicles. The brown lines are traced from aerial photography. They do not have names or any particular ownership, so they may not be maintained or passable. They are valuable to forest fire fighters, hunters and outdoor enthusiasts.

These **map pages** are now available individually for **free** from our website. www.mapmet.com. They are often 2 megs or more in size and downloadable as PDF files. If you just want one page, this might be a better option for you. While you are there, you can check out our expanding collection of Internet maps with topics such as Rock sites, Museums, Small Farms and Ghost Towns. The maps connect to articles, web sites and pictures.

Another popular map of Ferry County is our **Geologic Atlas of Ferry County**. It contains most of the road data in this atlas as well as locations for 500 mines and an index showing their metals and minerals with a GPS

position. The Geologic Atlas includes a 6 page review of local geology, base rock types, 500 foot contour lines and public land ownership. We also publish similar Geologic Atlases for Stevens and Pend Oreille Counties.

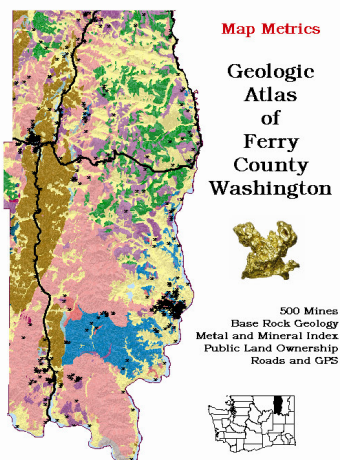


Table of Contents

Page	Contents
I	Title Page
II	Recreation Guide
III	Map Legend
IV-VII	Large Scale Maps
1-48	Map Pages
Back	Key to Pages

Thanks to Shelly Burbank in Ferry County dispatch for a road update, to George McNicholl at the USFS in Kettle Falls and to all the others who helped with this book.

Map Metrics has updated its folding map of **Northeast Washington** for 2008. This map folds out to 27" x 35". It shows all major roads in Ferry, Stevens and Pend Oreille Counties and has an index of 1600 road names, public land ownership, recreation sites and street maps of most major cities and lakes in the area. These maps cost \$1.50 each from our web site and \$1.00 each in bundles of 25 or more. Please let us know if you find errors or omissions on any of our products.

Retail Outlets

Republic Drug

6 North Clark Ave
Republic, WA 99166
(509) 775-3351

Coffee and Books

Town Center Building
Colville, WA 99114
(509) 684-3512

Clark's Allsport

557 S. Main St
Colville, WA 99114
(509) 684-5069

N.W. Map Service

525 West Sprague Ave.
Spokane, WA 99205
(509) 455-6981

© July 2008

Map Metrics

2109 Hwy 25 South

Kettle Falls, WA 99141

(509) 738-6155

www.mapmet.com

